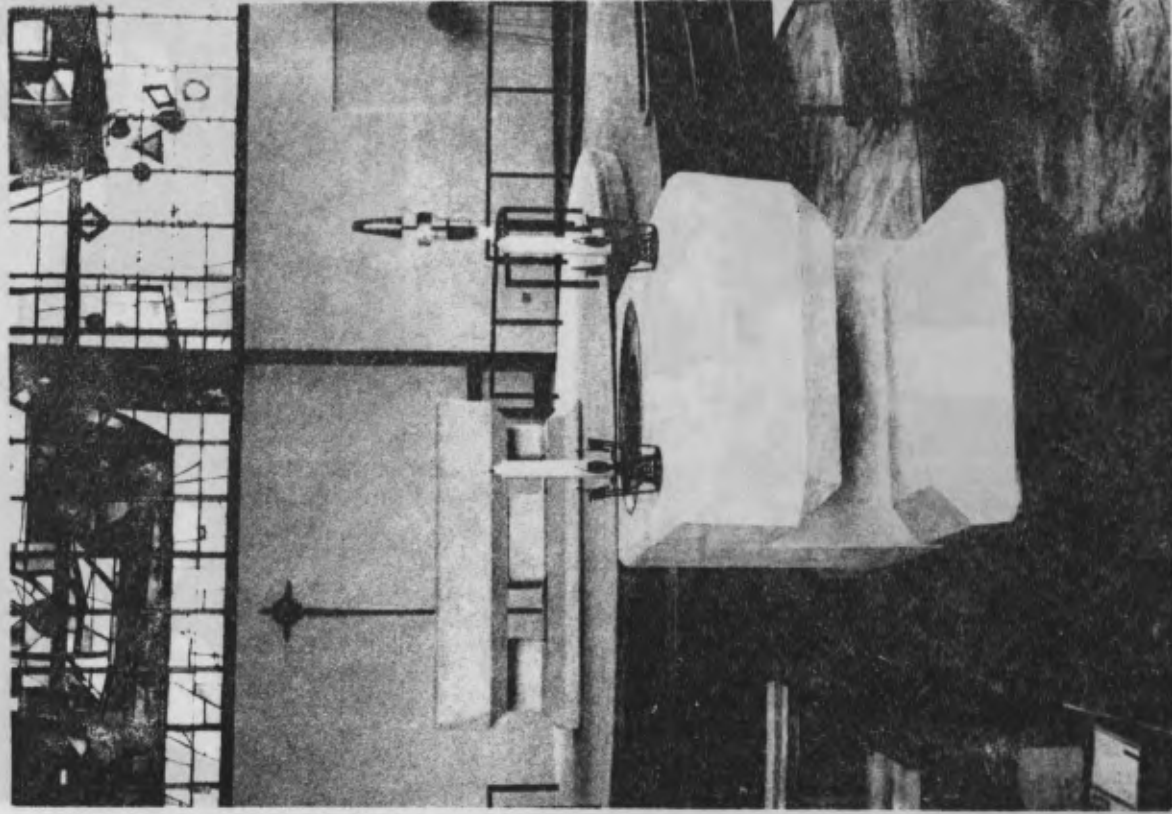


# ST. JOHN'S CHURCH, ERMINE



| Looking ahead...



WE NOW HAVE

A Parish Church

A Church - Community  
Centre

A Parish Hall

Two Clergy Houses



*and a big family . . .*





meeting  
the needs ..





. of all



TWO INFANT SUNDAY SCHOOLS  
TWO JUNIOR SUNDAY SCHOOLS  
CONFIRMATION CLUB

CHURCH LADS BRIGADE  
TWO GIRL GUIDE COMPANIES  
TWO BROWNIE PACKS  
BOY SCOUTS AND CUBS

MOTHERS UNION  
SATURDAY SOCIAL CLUB  
TWO EVERGREEN CLUBS

CARE OF THE ELDERLY  
ERMINE NEWS  
SOCIAL EVENTS

MARRIAGE GUIDANCE  
PERSONAL COUNSELLING  
HEALING MINISTRY

INSTRUCTION IN THE FAITH  
STUDY GROUPS

CHURCH SERVICES AND PRAYER FOR THE WHOLE PARISH

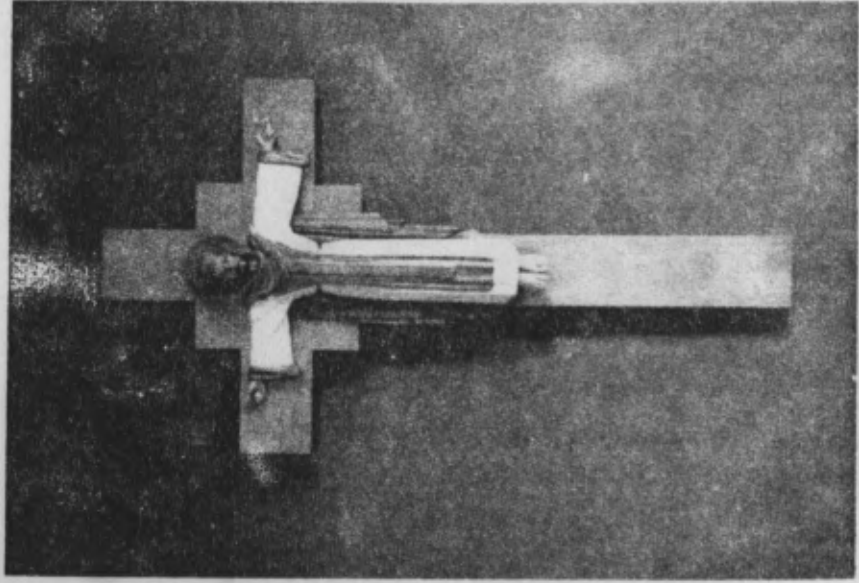
AND GIVING PILYER AND MONY  
TO THOS N IN NEED  
AT HOME AND OVERSEAS





AND GIVING PRAYER AND MONEY  
TO THOSE IN NEED  
AT HOME AND OVERSEAS

Christ gave himself



Christ gave himself...



And so must we . . .  
. . . our time, our love,  
our money.

It costs about 5/- per week for each active church family for maintenance, wages, repayment of mortgage, and administration.

We need to complete the church with a block of vestries and club rooms, which will join up with the hall. This will enable us to increase our work and activities, but it will cost in the region of £10,000.

THERE IS NO LIMIT TO WHAT WE OUGHT TO GIVE, AS A CHURCH, TO MANY OF GOD'S CHILDREN IN GREAT NEED.

Regular and generous giving, in proportion to what we have received, is an act of thanksgiving to God, and a source of great blessing to the giver.

WE BROUGHT NOTHING INTO THIS WORLD,  
AND IT IS CERTAIN THAT WE CAN CARRY NOTHING OUT.

..... All that we have then, is given to us on trust, that we may use it wisely as good stewards.

The work of the Church continues week by week, and at St. John's the church families have a box of envelopes for each week.

Put your family offering into its envelope each pay-day - and thank God for it - and then bring it with you to church. If you can't get, then bring it with you when you can, or send it.

ONLY THOSE WHO GIVE, KNOW THE GREAT JOY AND BLESSING WHICH THIS BRINGS.



One of the men of our church will visit you during the next few days to answer any questions that you may have.

He will bring with him a pledge card on which the family promises how much it is hoped to give each week.

This is an indication and in no sense a legal commitment. It can be amended at any time. But, like any wise house-holder the church needs to estimate its income, so that it can plan and spend wisely.

God puts the future in our hands!